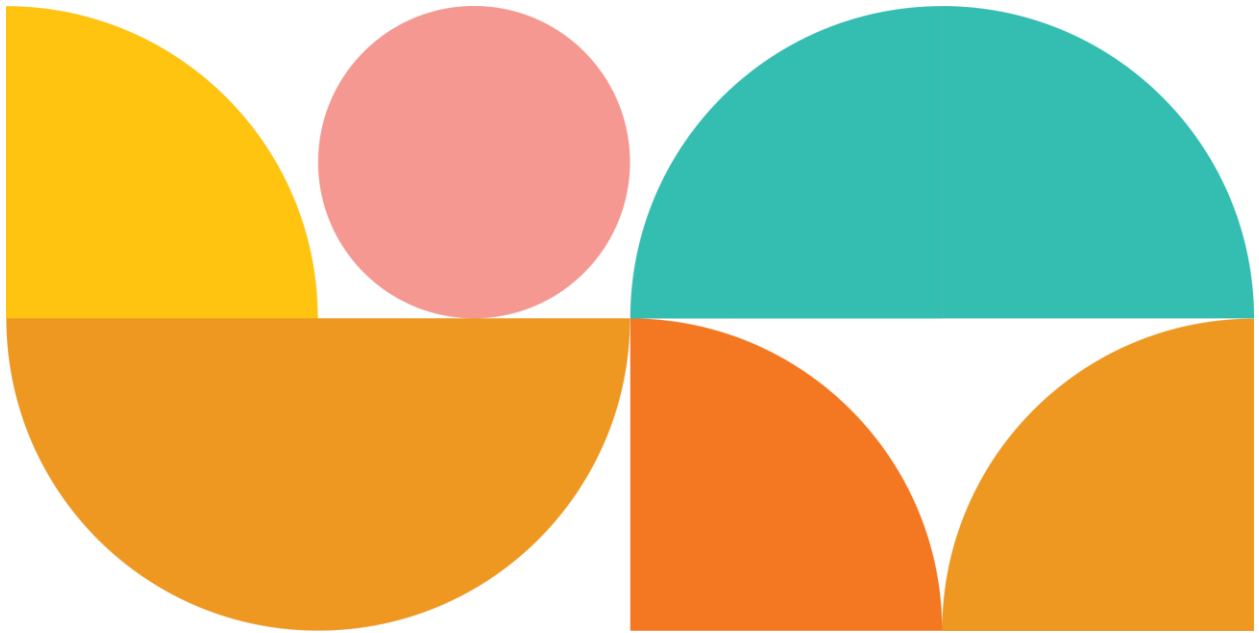


28/07/2023

WSUS

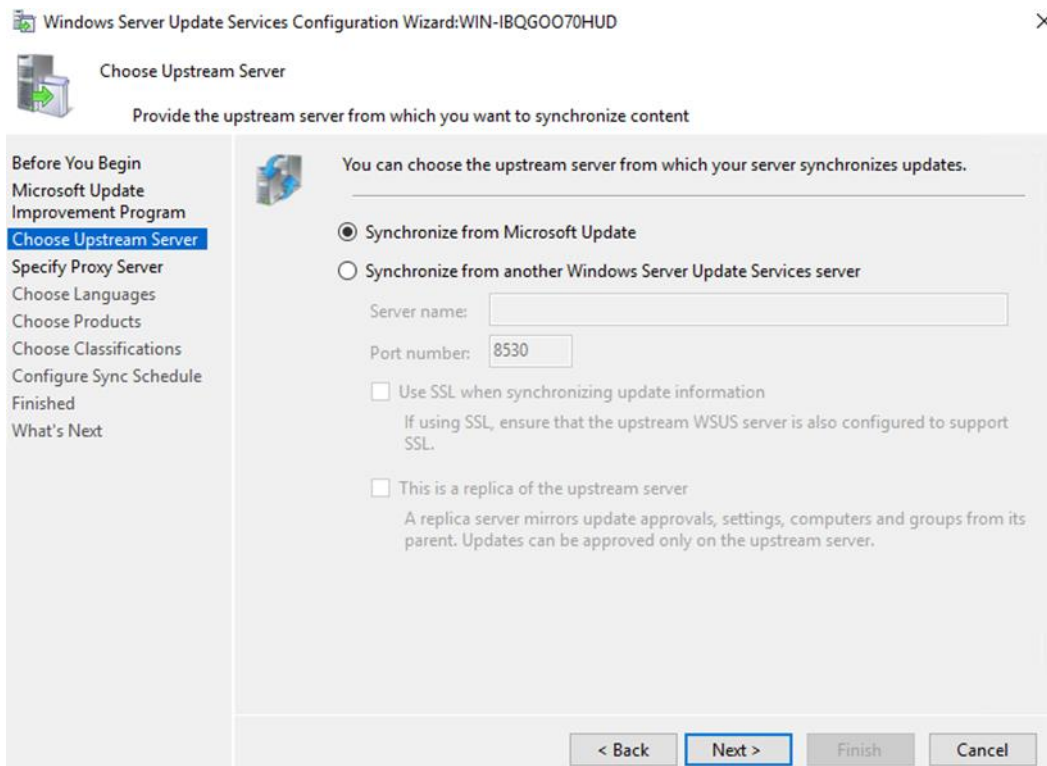


Jocelin Rey

## Install du WSUS

Prérequis : Refaire une VM qui sera connecté aux réseaux pour aller chercher les mises à jour sur le serveur de Microsoft.

Attention : Lors de l'installation on vous demande ou seront stocker les mises à jour prévoir un emplacement prévu avec de la place entre 150-300 Go.



Une fois le téléchargement de WSUS fait. Se diriger vers Tools. Deux choix :

- Synchroniser avec le srv de Microsoft update
- Synchroniser avec un srv en local

Comme je n'ai pas de srv en local qui a déjà les mises à jour de Windows je vais me synchroniser avec celui de Microsoft.

Windows Server Update Services Configuration Wizard:WIN-IBQGOO70HUD

Specify Proxy Server

Provide proxy server settings for synchronizing updates with Microsoft Update

Before You Begin  
Microsoft Update Improvement Program  
Choose Upstream Server  
**Specify Proxy Server**  
Choose Languages  
Choose Products  
Choose Classifications  
Configure Sync Schedule  
Finished  
What's Next

If this server requires a proxy server to access the upstream server, you can configure the proxy server settings here.

☐ Use a proxy server when synchronizing

Proxy server name:

Port number:

☐ Use user credentials to connect to the proxy server

User name:

Domain:

Password:

☐ Allow basic authentication (password is sent in cleartext)

< Back Next > Finish Cancel

Si vous avez un proxy

Windows Server Update Services Configuration Wizard:WIN-IBQGOO70HUD

Connect to Upstream Server

Download update information from Microsoft Update

Before You Begin  
Microsoft Update Improvement Program  
Choose Upstream Server  
**Specify Proxy Server**  
Choose Languages  
Choose Products  
Choose Classifications  
Configure Sync Schedule  
Finished  
What's Next

To configure Windows Server Update Services on the following screens, we need to apply your upstream server and proxy server settings and synchronize information about available updates.

Information to be downloaded includes:

- Types of updates available
- Products that can be updated
- Available languages

Click Start Connecting to save and download upstream server and proxy server information. This process might take several minutes or longer, depending on your connection speed.

Start Connecting Stop Connecting

< Back Next > Finish Cancel

Commencer à télécharger les updates



## Choose Languages

Select the languages for which this server will download updates

Before You Begin  
Microsoft Update  
Improvement Program  
Choose Upstream Server  
Specify Proxy Server  
**Choose Languages**  
Choose Products  
Choose Classifications  
Configure Sync Schedule  
Finished  
What's Next



If you are storing update files locally, you can filter the updates downloaded to your server by language. Choosing individual languages will affect which computers can be updated on this server and any downstream servers.

- ☐ Download updates in all languages, including new languages
- ☒ Download updates only in these languages:

<input type="checkbox"/> Arabic	<input checked="" type="checkbox"/> French	<input type="checkbox"/> Norwegian
<input type="checkbox"/> Bulgarian	<input type="checkbox"/> German	<input type="checkbox"/> Polish
<input type="checkbox"/> Chinese (Hong Kong S.A.R.)	<input type="checkbox"/> Greek	<input type="checkbox"/> Portuguese
<input type="checkbox"/> Chinese (Simplified)	<input type="checkbox"/> Hebrew	<input type="checkbox"/> Portuguese
<input type="checkbox"/> Chinese (Traditional)	<input type="checkbox"/> Hindi	<input type="checkbox"/> Romanian
<input type="checkbox"/> Croatian	<input type="checkbox"/> Hungarian	<input type="checkbox"/> Russian
<input type="checkbox"/> Czech	<input type="checkbox"/> Italian	<input type="checkbox"/> Serbian (Lati
<input type="checkbox"/> Danish	<input type="checkbox"/> Japanese	<input type="checkbox"/> Slovak
<input type="checkbox"/> Dutch	<input type="checkbox"/> Japanese (NEC)	<input type="checkbox"/> Slovenian
<input checked="" type="checkbox"/> English	<input type="checkbox"/> Korean	<input type="checkbox"/> Spanish
<input type="checkbox"/> Estonian	<input type="checkbox"/> Latvian	<input type="checkbox"/> Swedish
<input type="checkbox"/> Finnish	<input type="checkbox"/> Lithuanian	<input type="checkbox"/> Thai

&lt; Back

Next &gt;

Finish

Cancel

Before You Begin  
Microsoft Update  
Improvement Program  
Choose Upstream Server  
Specify Proxy Server  
Choose Languages  
**Choose Products**  
Choose Classifications  
Configure Sync Schedule  
Finished  
What's Next



You can specify the products for which you want updates.

## Products:

<input type="checkbox"/> Windows Server 2012 R2 Drivers
<input type="checkbox"/> Windows Server 2012 R2 Language Packs
<input type="checkbox"/> Windows Server 2012 R2
<input type="checkbox"/> Windows Server 2012
<input type="checkbox"/> Windows Server 2016 and Later Servicing Drivers
<input type="checkbox"/> Windows Server 2016
<input type="checkbox"/> Windows Server 2019 and later, Servicing Drivers
<input type="checkbox"/> Windows Server 2019 and later, Upgrade & Servicing Drivers
<input type="checkbox"/> Windows Server 2019 Datacenter: Azure Edition Hotpatch
<input checked="" type="checkbox"/> Windows Server 2019
<input type="checkbox"/> Windows Server Drivers
<input type="checkbox"/> Windows Server Technical Preview Language Packs
<input type="checkbox"/> Windows Server 2008 R2

Category for Windows Ultimate Extras

&lt; Back

Next &gt;

Finish

Cancel

Before You Begin  
Microsoft Update  
Improvement Program  
Choose Upstream Server  
Specify Proxy Server  
Choose Languages  
**Choose Products**  
Choose Classifications  
Configure Sync Schedule  
Finished  
What's Next



You can specify the products for which you want updates.

Products:

<input type="checkbox"/>	Windows 10, version 1809 and later, Servicing Drivers
<input type="checkbox"/>	Windows 10, version 1809 and later, Upgrade & Servicing Drivers
<input type="checkbox"/>	Windows 10, version 1903 and later, Servicing Drivers
<input type="checkbox"/>	Windows 10, version 1903 and later, Upgrade & Servicing Drivers
<input type="checkbox"/>	Windows 10, version 1903 and later
<input type="checkbox"/>	Windows 10, Vibranium and later, Servicing Drivers
<input type="checkbox"/>	Windows 10, Vibranium and later, Upgrade & Servicing Drivers
<input type="checkbox"/>	Windows 10
<input type="checkbox"/>	Windows 11 Dynamic Update
<input type="checkbox"/>	Windows 11 GDR-DU
<input checked="" type="checkbox"/>	Windows 11
<input type="checkbox"/>	Windows 2000
<input type="checkbox"/>	Windows 7

Category for Windows 8.1 language interface packs

< Back

Next >

Finish

Cancel

Before You Begin  
Microsoft Update  
Improvement Program  
Choose Upstream Server  
Specify Proxy Server  
Choose Languages  
Choose Products  
**Choose Classifications**  
Configure Sync Schedule  
Finished  
What's Next



You can specify what classification of updates you want to synchronize.

Classifications:

<input type="checkbox"/>	All Classifications
<input type="checkbox"/>	Ensemble de mises à jour
<input type="checkbox"/>	Feature Pack
<input type="checkbox"/>	Jeux de pilotes
<input checked="" type="checkbox"/>	Mise à jour critique
<input checked="" type="checkbox"/>	Mise à jour de la sécurité
<input checked="" type="checkbox"/>	Mise à jour
<input checked="" type="checkbox"/>	Mises à jour de définitions
<input type="checkbox"/>	Outil
<input type="checkbox"/>	Pilote
<input type="checkbox"/>	Service Pack
<input type="checkbox"/>	Upgrades

A new product release bringing a device to the next version, containing bug fixes, design changes and new features.

< Back

Next >

Finish

Cancel

Before You Begin  
Microsoft Update  
Improvement Program  
Choose Upstream Server  
Specify Proxy Server  
Choose Languages  
Choose Products  
Choose Classifications  
**Configure Sync Schedule**  
Finished  
What's Next



You can synchronize updates manually or set a schedule for daily automatic synchronization.

- ☐ Synchronize manually  
☒ **Synchronize automatically**

First synchronization: 02:00:00

Synchronizations per day: 1

Note that when scheduling a daily synchronization from Microsoft Update, the synchronization start time will have a random offset up to 30 minutes after the specified time.

< Back **Next >** Finish Cancel

Before You Begin  
Microsoft Update  
Improvement Program  
Choose Upstream Server  
Specify Proxy Server  
Choose Languages  
Choose Products  
Choose Classifications  
Configure Sync Schedule  
**Finished**  
What's Next



You have now finished configuring your WSUS server. You can go on to launch the WSUS Administration Console or start the initial synchronization.

- ☐ Launch the Windows Server Update Services Administration Console  
Get started administering your organization by starting the Windows Server Update Services Administration Console.

☒ **Begin initial synchronization**

The initial synchronization with Microsoft Update or your upstream server can take some time. The length of the initial synchronization depends on the number of products, update classifications, and languages you have selected, as well as the speed of your Internet connection.

< Back **Next >** Finish Cancel

Mettre à jour les services

Fichier Action Affichage Fenêtre ?



Update Services  
▼ SRV-WSUS  
    > Updates  
    > Computers  
    > Downstream Servers  
    > **Synchronizations**  
    > Reports  
    > Options

Synchronizations (2 synchronizations)

Started	Finished	Type	Result
N/A	N/A	N/A	Running...
18/03/2022 11:57	18/03/2022 12:11	Manual	Succeeded



Synchronization Status

Status: Synchronizing...

Progress: 0%